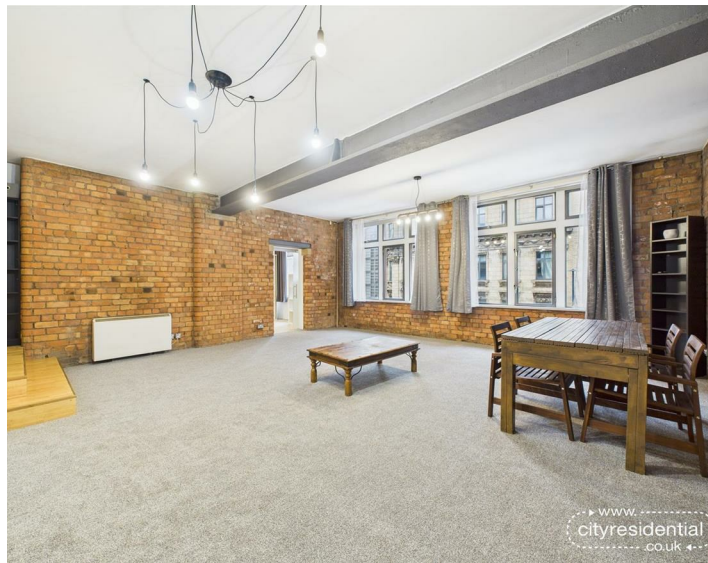


Abbey Building 12 Old Haymarket, Liverpool, L1 6ER
£1,175 PCM

WWW.
cityresidential
.co.uk



About the Property

Looking for a unique and spacious apartment in the heart of the city?

Don't miss this opportunity to rent this stunning two-bedroom loft style apartment in the historic Abbey Building. This second floor apartment boasts original features such as exposed brickwork and steelwork, giving it a distinctive character and charm.

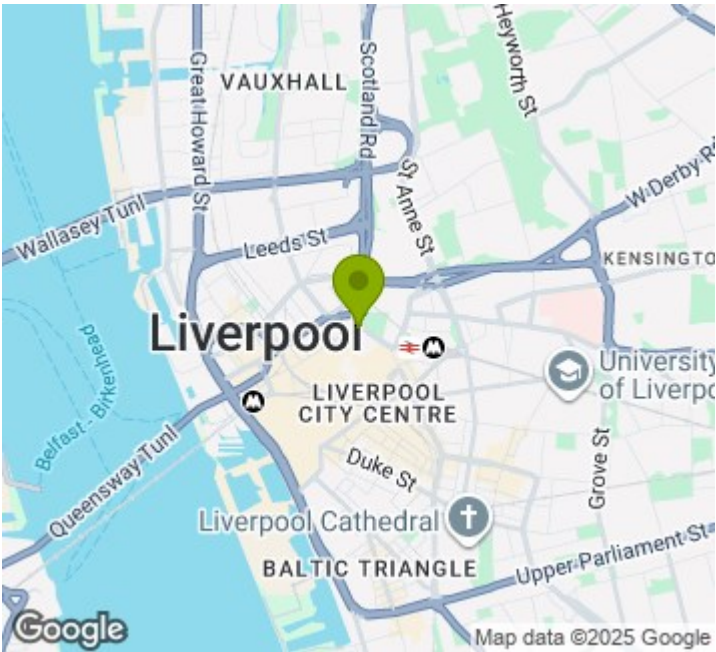
The apartment has a open plan living, dining and kitchen area, two large bedrooms, ensuite and a main bathroom.

There is no lift in this development.


EPC Rating - C. Council Tax Band - E. A deposit amount of £1355 is payable upon moving in.

Don't miss out on this incredible opportunity to call Abbey Building your new home, call City Residential now to arrange a viewing!

- EPC Rating - C
- Council Tax Band - E
- Deposit Payable £1355
- No Parking



Energy Efficiency Rating

	Current	Potential
Very energy efficient - lower running costs		
(92 plus) A		
(81-91) B		
(69-80) C		
(55-68) D		
(39-54) E		
(21-38) F		
(1-20) G		
Not energy efficient - higher running costs		
	82	83
England & Wales	EU Directive 2002/91/EC 	



City Residential
81/87 Victoria Street, The Old Haymarket, Liverpool L1 6DG
T: 0151 231 6100 F: 0151 231 6105
E: sales@cityresidential.co.uk



WWW.
cityresidential
.co.uk